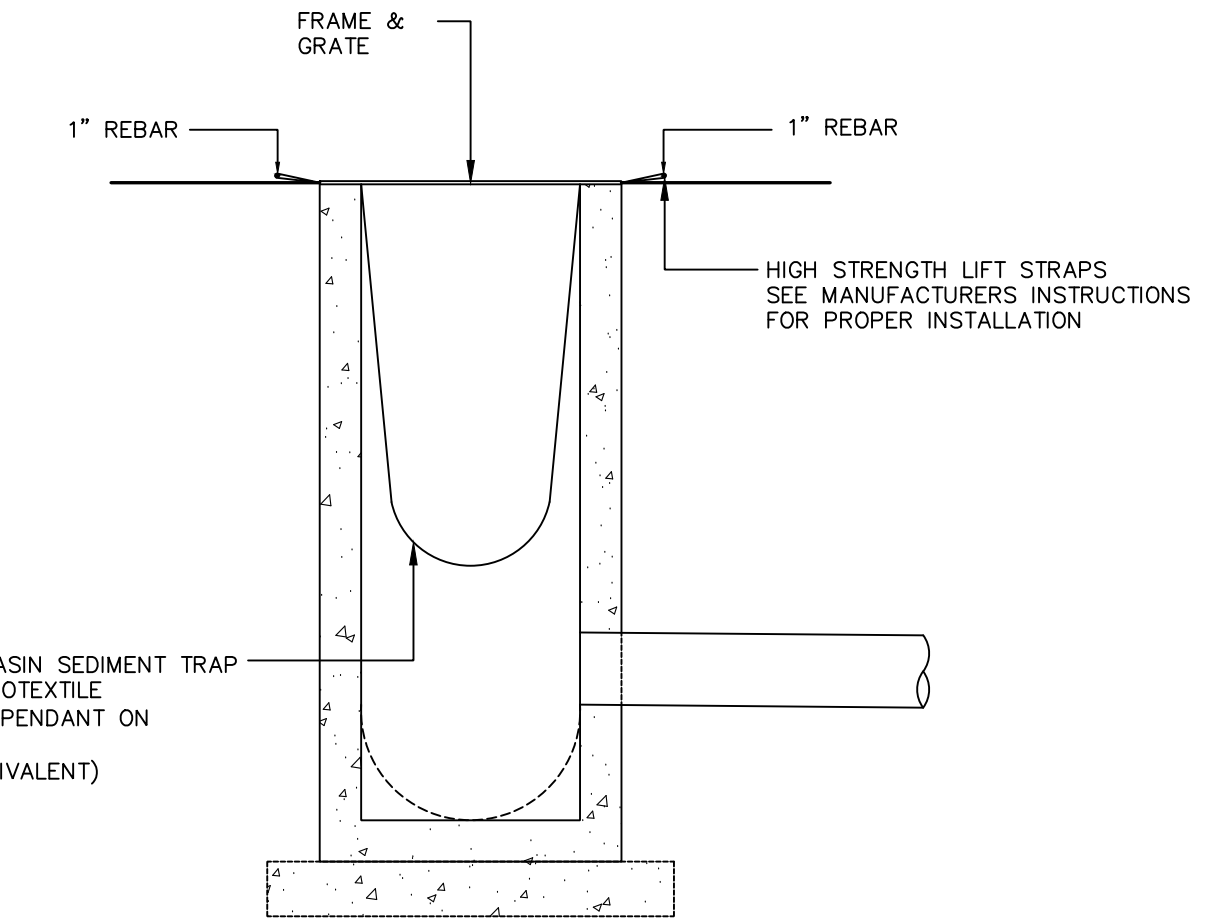
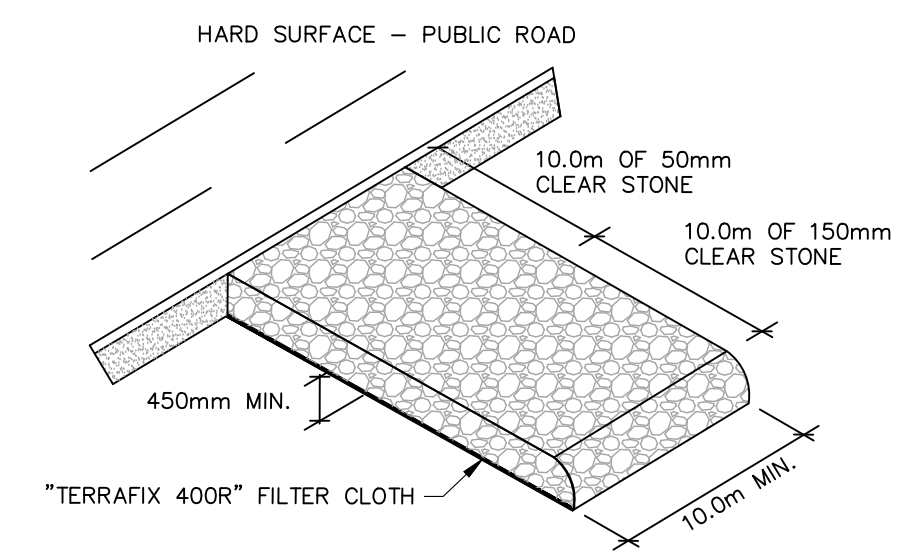


EROSION AND SEDIMENT CONTROL:

1. EROSION AND SEDIMENT CONTROL (ESC) MEASURES WILL BE IMPLEMENTED PRIOR TO, AND MAINTAINED DURING CONSTRUCTION PHASES, TO PREVENT ENTRY OF SEDIMENT INTO THE WATER. ALL DAMAGED EROSION AND SEDIMENT CONTROL MEASURES SHOULD BE REPAIRED OR REPLACED WITHIN 48 HOURS OF INSPECTION OR BOTH.
2. ALL DISTURBED AREAS WILL BE MINIMIZED TO THE EXTENT POSSIBLE, AND TEMPORARILY OR PERMANENTLY STABILIZED OR RESTORED AS THE WORK PROGRESSES.
3. THE EROSION AND SEDIMENT CONTROL STRATEGIES OUTLINED ON THE PLANS ARE NOT STATIC AND MAY NEED TO BE UPGRADED/AMENDED AS SITE CONDITIONS CHANGE TO MINIMIZE SEDIMENT LADEN RUNOFF FROM LEAVING THE WORK AREA. IF THE PRESCRIBED MEASURES ON THE PLANS ARE NOT EFFECTIVE IN PREVENTING THE RELEASE OF A DELETERIOUS SUBSTANCE, THEN ALTERNATIVE MEASURES MUST BE IMPLEMENTED IMMEDIATELY TO MINIMIZE POTENTIAL ECOLOGICAL IMPACTS AND A TORONTO REGION CONSERVATION AUTHORITY ENFORCEMENT OFFICE SHOULD BE IMMEDIATELY CONTACTED. ADDITIONAL ESC MEASURES TO BE KEPT ON SITE AND USED AS NECESSARY.
4. ALL ACTIVITIES, INCLUDING MAINTENANCE PROCEDURES, WILL BE CONTROLLED TO PREVENT THE ENTRY OF PETROLEUM PRODUCTS, DEBRIS, RUBBLE, CONCRETE OR OTHER DELETERIOUS SUBSTANCES INTO THE WATER. VEHICULAR REFUELING AND MAINTENANCE AND REFUELING WILL BE CONDUCTED A MINIMUM OF 30m FROM THE WATER.
5. ALL GRADES WITHIN THE REGULATORY FLOOD PLAIN WILL BE MAINTAINED OR MATCHED.



SITE CATCHBASIN SEDIMENT CONTROL DEVICE
N.T.S.



TEMPORARY GRAVEL ACCESS PAD
N.T.S.



LEGEND

- SEDIMENT CONTROL DEVICE
- OVERLAND FLOW
- LIGHT DUTY SILT CONTROL FENCE AS PER OPSD 219.110

ELEVATION
ELEVATIONS SHOWN HEREON ARE GEODETIC AND ARE RELATED TO CITY OF TORONTO BENCH MARK NO. CT556 HAVING AN ELEVATION OF 91.165 METRES.

REV. No.	ISSUED FOR ZBA	21-06-04
	REVISION NOTE	DATE
1	ISSUED FOR ZBA	21-06-04



BATHURST AND RICHMOND

HUSSON ENGINEERING + MANAGEMENT
 P 905.709.6826
 300 CAGNEY WOODS COURT, SUITE 204
 MARKHAM, ON L3R 0Z9
 HUSSON.CA

Toronto ENGINEERING AND CONSTRUCTION SERVICES DIVISION
 ACCEPTED TO BE IN ACCORDANCE WITH THE CITY OF TORONTO STANDARDS.
 THIS ACCEPTANCE IS NOT TO BE CONSTRUED AS VERIFICATION OF ENGINEERING CONTENT.
 Manager, Development Engineering DATE: _____

SW3
EROSION AND SEDIMENT CONTROL PLAN
 DATE: JUNE 4, 2021 SCALE: 1:150 PROJECT: 211176
 DESIGNED BY: WS CHECKED BY: GKR
 DRAWN BY: WS CHECKED BY: GKR