

TREE INVENTORY

152 to 164 Bathurst Street,
623 and 627 Richmond Street West, Toronto

Arboret: Patricia Thomson
Thomson Watson Consulting Arborists Inc.

Tree No.	Tree Species	Diameter (cm)	Condition	Tree Category					Comments	Protection Distance Required	
				1	2	3	4	5			
1	Ornamental Pear	38	fair							at front of 627 Richmond Street, very slow growth, trunk on slight lean to north, full canopy	2.4 m TPZ
2	Tree of Heaven	20	good							possible underground girdling roots to north, east and south, possible asphalt indentation black spot on bark, trunk splits into two stems at 4 metres with included bark in union, growing well	2.4 m TPZ
3	Sugar Maple	27.5	good							growing up wood fence, tree splits into two stems at 4 metres with included bark in union and stems pressed together to above 1.4 metres - both main stems appear dead (bark off, no buds on remaining branches), sprouts to north are alive	2.4 m TPZ
4	Buckthorn	18, 18 caliper	poor							in raised bed with compost heap around trunk, tree splits into two stems at 4 metres from grade with included bark in union	2.4 m TPZ
5	Honeylocust	23.5	good							tree splits into two stems at 2 and 2.25 m with included bark in lower union, trunk against chain-link fence	2.4 m TPZ
6	Scots Elm	36	good	X	X					could be dead, large branches in canopy with bark falling off	2.4 m TPZ
7	Tree of Heaven	approx. 35	good	X	X					near chain-link fence, trunk splits into two stems at 3 metres with adequate union, root outcropped at north base, compacted soil to north of tree	2.4 m TPZ
8	Ash	approx. 50	poor	X	X					2 separate trees with multiple upright sprouts, base of trees against building	3.0 m TPZ
9	Tree of Heaven	36	fair	X	X					within small raised garden bed, no live buds seen	2.4 m TPZ
10	White Mulberry	10 max	fair							within sidewalk pit, slow growth, canopy extends to building	1.8 m TPZ
11	Elm	4.5	dead							within sidewalk pit, slow growth	1.8 m TPZ
12	Honeylocust	16	fair							within sidewalk pit, slow growth, canopy extends to building	1.8 m TPZ
13	Honeylocust	10	poor-fair							within sidewalk pit, wounded root to west, sprouts on trunk, small canopy, very slow growth	1.8 m TPZ
14	Elm	13.5	good							within sidewalk pit, tree splits into two stems at 2.25 metres with included bark in union, heavy flower production, vertical cracks up NW side of trunk from ground X to 1.2 m	1.8 m TPZ
15	Hackberry	21	good							within sidewalk pit, full canopy, good growth, stores around trunk need to be removed, crack up east side of trunk from ground to 3 m	1.8 m TPZ
16	Hackberry	18	fair							within sidewalk pit, crack up west side of trunk from ground to 3 m, slow growth	1.8 m TPZ
17	Honeylocust	18	good							within sidewalk pit, full crown	1.8 m TPZ
18	Red Maple	23.5	fair							within planting bed, girdling roots to south side of trunk with possible underground girdling roots in other directions, upright growth, slow growth	1.8 m TPZ

Tree Category 1- private trees subject property 30 cm +
Category 2- private trees adjacent properties 30 cm +
Category 5- municipal trees

Page 1 TPZ= Tree Protection Zone

TREES TO BE REMOVED FOR DEVELOPMENT

152 to 164 Bathurst Street,
623 and 627 Richmond Street West, Toronto

Tree No.	Tree Species	Diameter (cm)	Condition	Reason for Removal
MUNICIPAL TREES TO BE REMOVED				
1	Ornamental Pear	38	fair	within entrance driveway to site
PRIVATE TREES 30 CM + TO BE REMOVED				
6	Scots Elm	36	good	at edge of property adjacent foundation
9	Tree of Heaven	36	fair	at edge of property adjacent to foundation
PRIVATE TREES <30 CM TO BE REMOVED				
2	Tree of Heaven	20	good	within building footprint
3	Sugar Maple	27.5	good	within building footprint
4	Buckthorn	18, 18 caliper	poor	within building footprint
5	Honeylocust	23.5	good	within building footprint, at edge of property adjacent to foundation
10	White Mulberry	10 max	fair	within building footprint

Tree Protection Barriers

- Tree protection barriers must be constructed with a solid wood frame clad with plywood or approved equivalent. Height of hoarding may be less than 8 ft. to accommodate any branches that may be lower.
- Tree protection barriers for trees situated on the City road allowance where visibility must be maintained can be 1.2m (4ft.) high and consist of orange plastic web snow fencing on a wood frame made of 2 x 4s.
- Where some excavate or fill has to be temporarily located near a tree protection barrier, plywood must be used to ensure no material enters the Tree Protection Zone.
- No construction activity, grade changes, surface treatment or excavations of any kind is permitted within the Tree Protection Zone.

Note:
Sediment control fencing shall be installed in locations indicated in an Urban Forestry approved Tree Protection Plan. The sediment control fencing must be installed to Ontario Provincial Standards (OPSD-219.130) heavy duty silt fence barrier and to the satisfaction of Urban Forestry. See Detail TP-2

Toronto Urban Forestry
Parks, Forestry and Recreation
February 2016 Detail TP-1

D1 TREE PROTECTION HOARDING
SCALE: N.T.S.

LEGEND:
● EXISTING DECIDUOUS TREE TO REMAIN
○ EXISTING DECIDUOUS TREE TO BE REMOVED
— PROPOSED BICYCLE RING
○ TREE PROTECTION ZONE
--- PROPERTY LINE

PROJECT NORTH GEODETIC NORTH

NOTES:
THE CITY BOULEVARD IS DESIGNED IN ACCORDANCE WITH THE MOST CURRENT VERSION OF THE CANADIAN HIGHWAY BRIDGE DESIGN CODE.
DESIGNED TO WITHSTAND VEHICULAR IMPACT LOADING IN ACCORDANCE WITH THE MOST CURRENT VERSION OF THE CANADIAN HIGHWAY BRIDGE DESIGN CODE.

REV	DESCRIPTION	DATE
1	ISSUED FOR REVISION	MAY 26, 21

Printed:

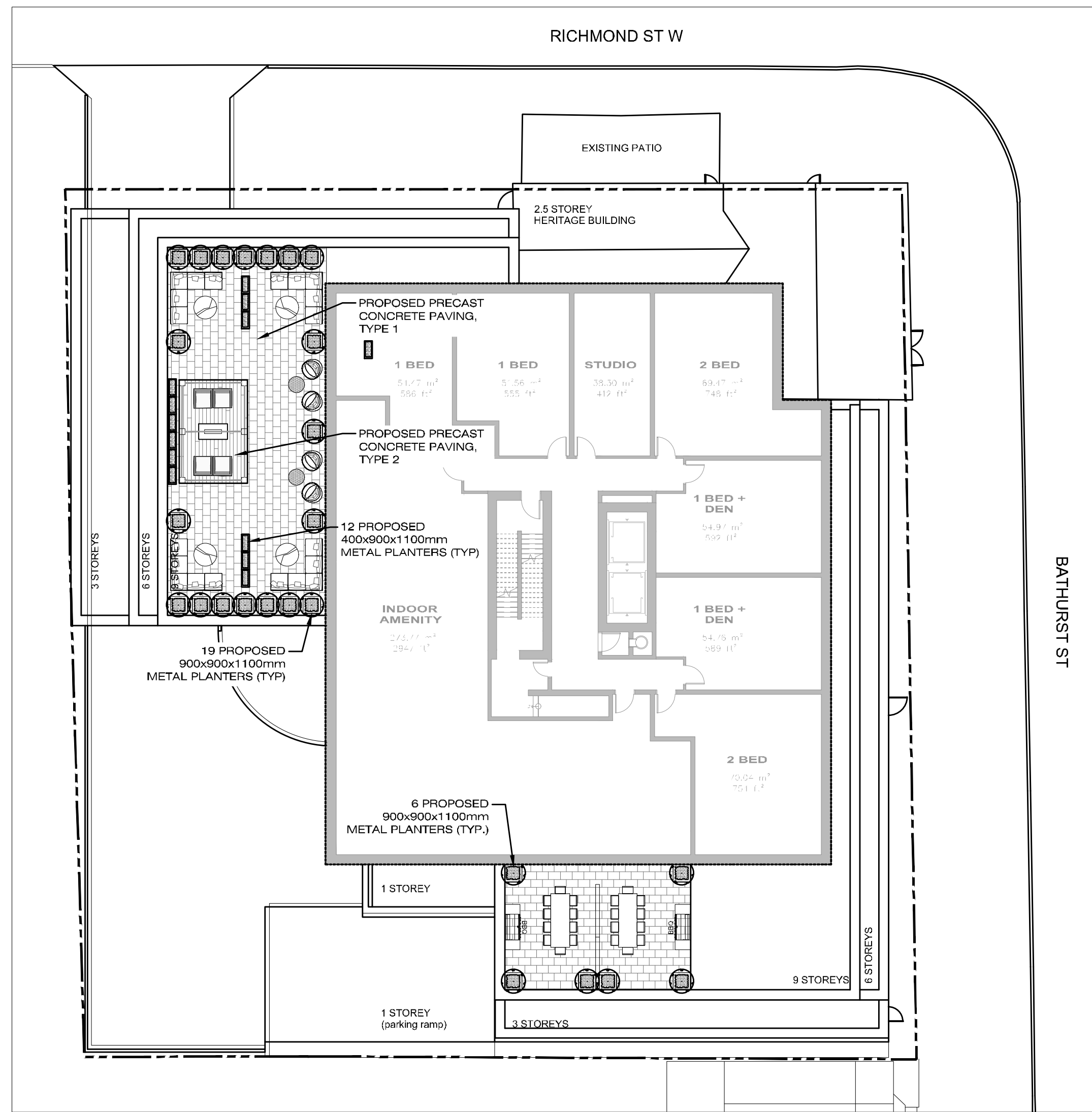
MARTEN-NIKZAD
LANDSCAPE ARCHITECTS INC.

1887 BAYVIEW AVENUE, UNIT 105
TORONTO, ONTARIO, M3B 3R9
T: 416-245-5299
F: 416-245-5299

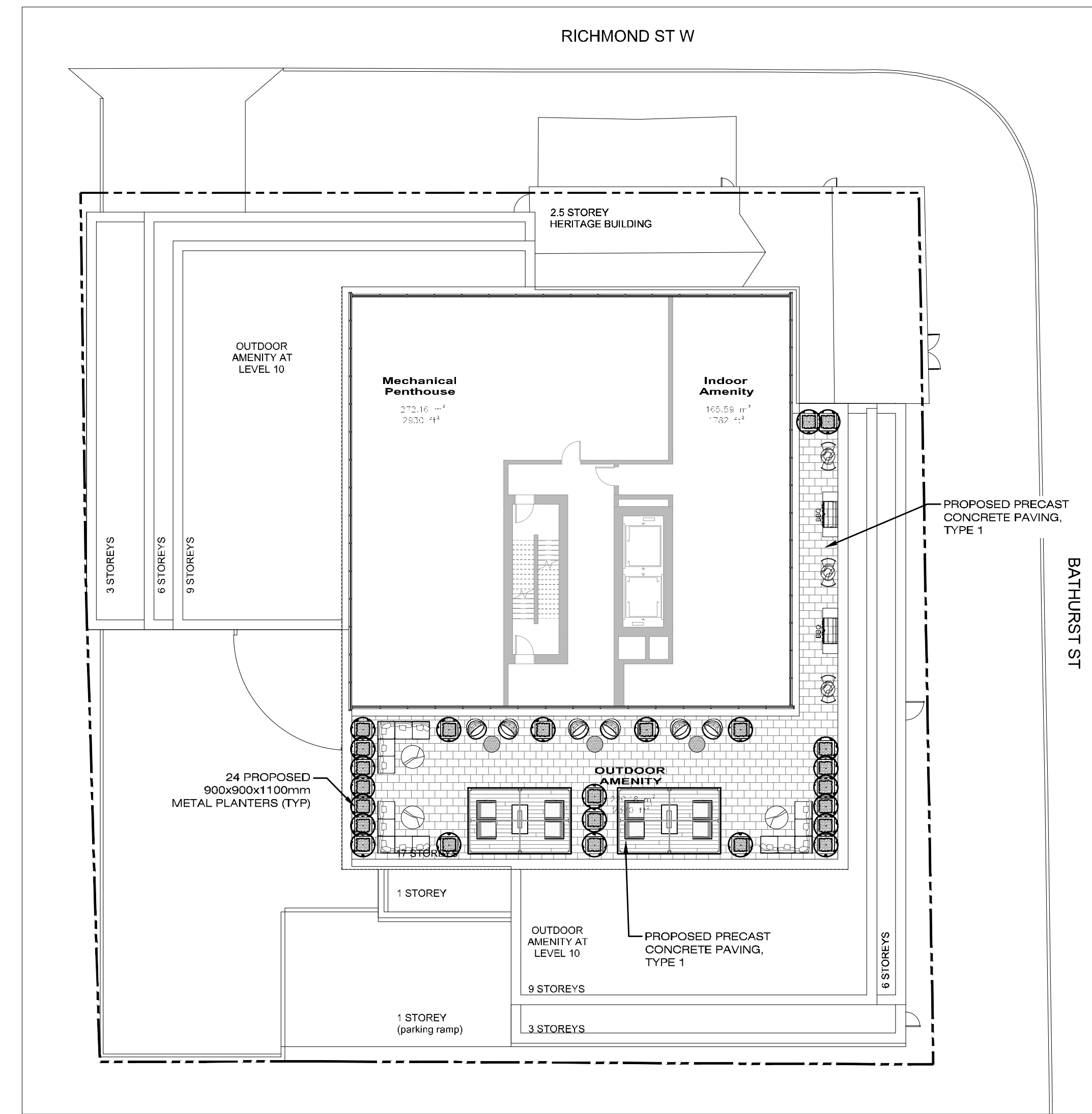
PROJECT ADDRESS:
BATHURST & RICHMOND
152-164 Bathurst Street and
623-627 Richmond Street, Toronto

TREE PRESERVATION, LANDSCAPE PLAN & DETAILS

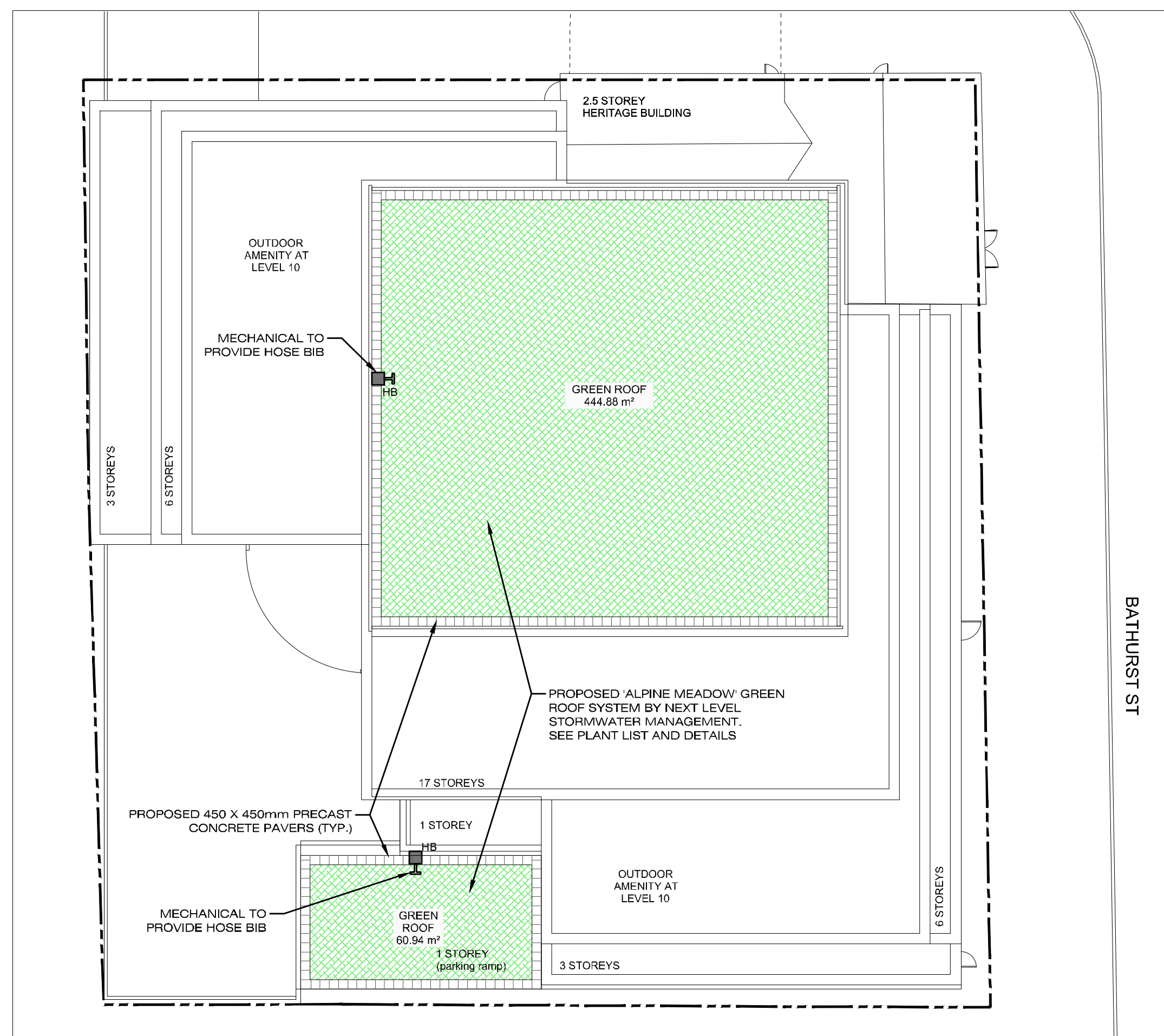
PROJECT NO. 21-648
SCALE AS SHOWN
DATE APR 2021
DWG. FILE 21-648.DWG
SITE PLAN APPLICATION NO.:
DWG. NO. **L100**



L1 10TH FLOOR OUTDOOR AMENITY PLAN
SCALE: 1:200



L2 MPH OUTDOOR AMENITY PLAN
SCALE: 1:200



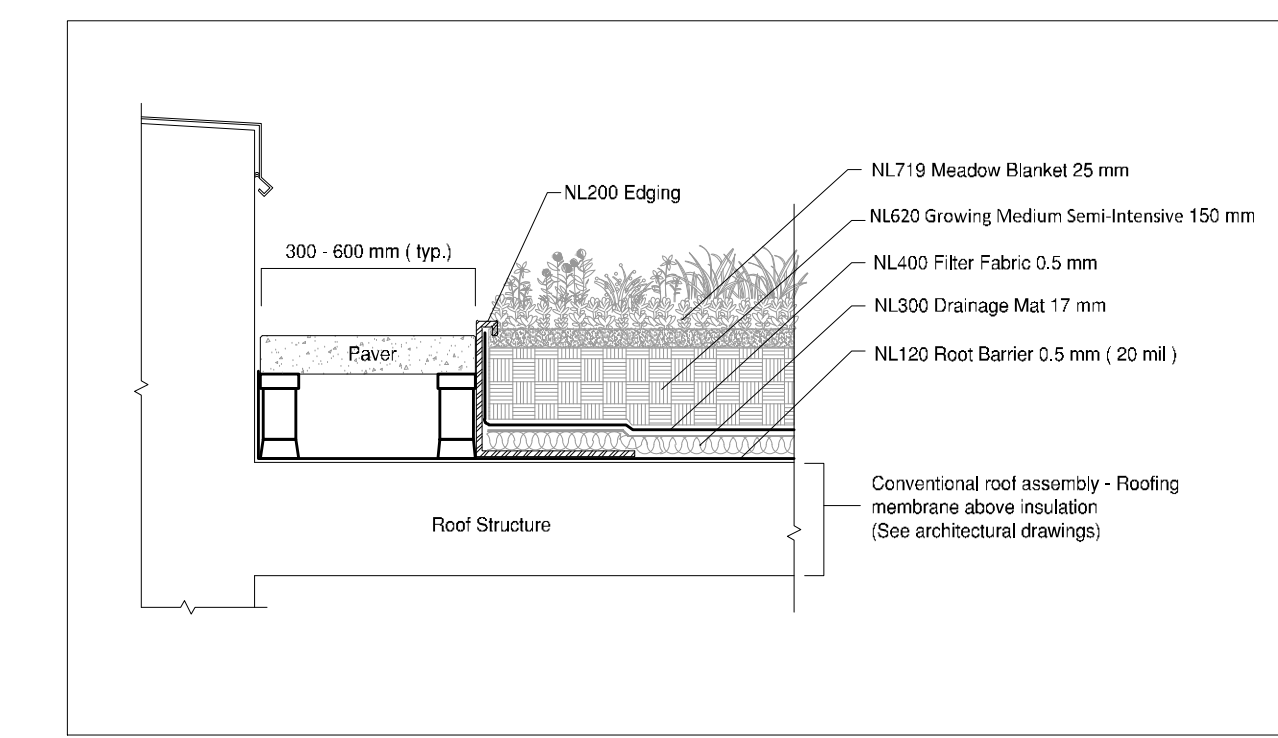
L3 GREEN ROOF
SCALE: 1:200

NOTES:
PRIOR TO INSTALLATION OF THE GREEN ROOF, THE ARCHITECT OR ENGINEER SHALL CAUSE TO BE CONDUCTED THE FLOOD TEST AND SUBMIT A REPORT DOCUMENTING A SUCCESSFUL TEST, SIGNED BY THE ARCHITECT OR ENGINEER, TO THE CHIEF BUILDING OFFICIAL.

NOTES:

- BUILDER TO SUPPLY EXTERNAL HOSE BIB CONNECTION TO GREEN ROOF FOR WATERING AND MAINTENANCE PURPOSES
- FOR ROOF PROFILE AND DRAINAGE SEE ARCHITECTURAL DRAWINGS
- ROOT BARRIER (INSTALLED BY ROOFING CONTRACTOR) THE ROOT BARRIER IS LOOSE LAID AND SHALL BE INSTALLED WITH A MINIMUM OF 30cm (12") OVERLAP. THE ENDS OF ROOT BARRIER ROLLS ALSO NEED TO BE OVERLAPPED. STAGGERING OF ADJACENT ROLLS TO AVOID CREATING A SEAM PERPENDICULAR TO THE LENGTH OF THE ROLL IS OPTIONAL. THE ROOT BARRIER ROLLS SHALL BE INSTALLED WORKING OUT FROM THE DRAINS. EACH SUBSEQUENT ROLL SHALL OVERLAP THE PREVIOUS ROLL BY 30cm (12") IN SHINGLE FASHION TO FACILITATE WATER FLOW TOWARDS THE DRAINS AND MINIMIZE WATER SEEPAGE BETWEEN THE ROLLS.
- INSULATION, FILTER FABRIC, STONE BALLAST TO BE SUPPLIED AND INSTALLED BY ROOFING CONTRACTOR.
- CONTACT SUPPLIER NEXT LEVEL STORMWATER MANAGEMENT AT 416-637-5772 FOR PRICING OR A LIST OF APPROVED INSTALLERS.
- XEROFLOR'S 2 YEAR VEGETATION WARRANTY IS CONDITIONAL UPON INSTALLER'S 2 YEAR MAINTENANCE PROGRAM TO ENSURE GREEN ROOF COVERAGE AFTER WARRANTY PERIOD.

Plant list		
Bouteloua curtipendula	Symphytotrichum laeve	Lobelia siphilitica
Carex brevior	Campanula rotundifolia	Dianthus carthusianorum
Asclepias incarnata	Monarda fistulosa	Saponaria ocymoides
Schyzachyrium scoparium	Verbena stricta	Sedum stoloniferum
Dianthus arenarius	Hieracium aurantiacum	Sedum album

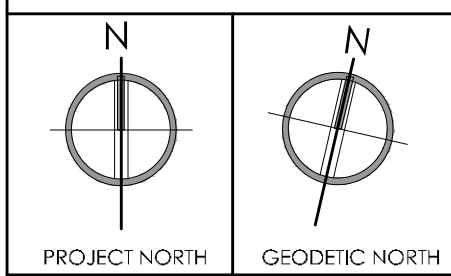


D1 GREEN ROOF DETAILS
SCALE: 1:200

SEDUM MIX:
NL719 Meadow Blanket
Next Level Stormwater Management



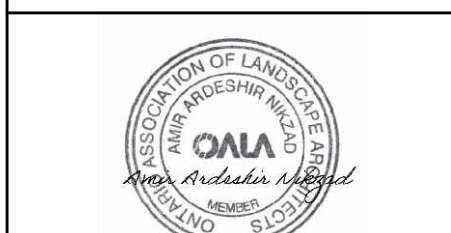
LEGEND: KEY MAP



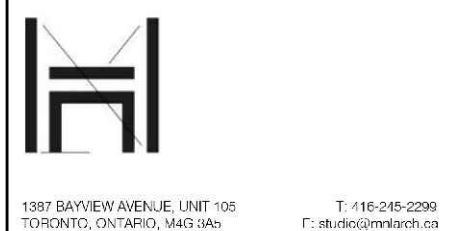
NOTES:

REV	DESCRIPTION	DATE
1	ISSUED FOR REVISION	MAY 26, 21

Issues/Revisions



MARTEN-NIKZAD
LANDSCAPE ARCHITECTS INC.



1887 BAYVIEW AVENUE, UNIT 105
TORONTO, ONTARIO, M4S 1A5
T: 416-245-5299
F: 416-245-5299

PROJECT ADDRESS:

BATHURST & RICHMOND

152-164 Bathurst Street and
623-627 Richmond Street, Toronto

**OUTDOOR AMENITY
PLANS & GREEN
ROOFS**

PROJECT No. 21-648

SCALE AS SHOWN

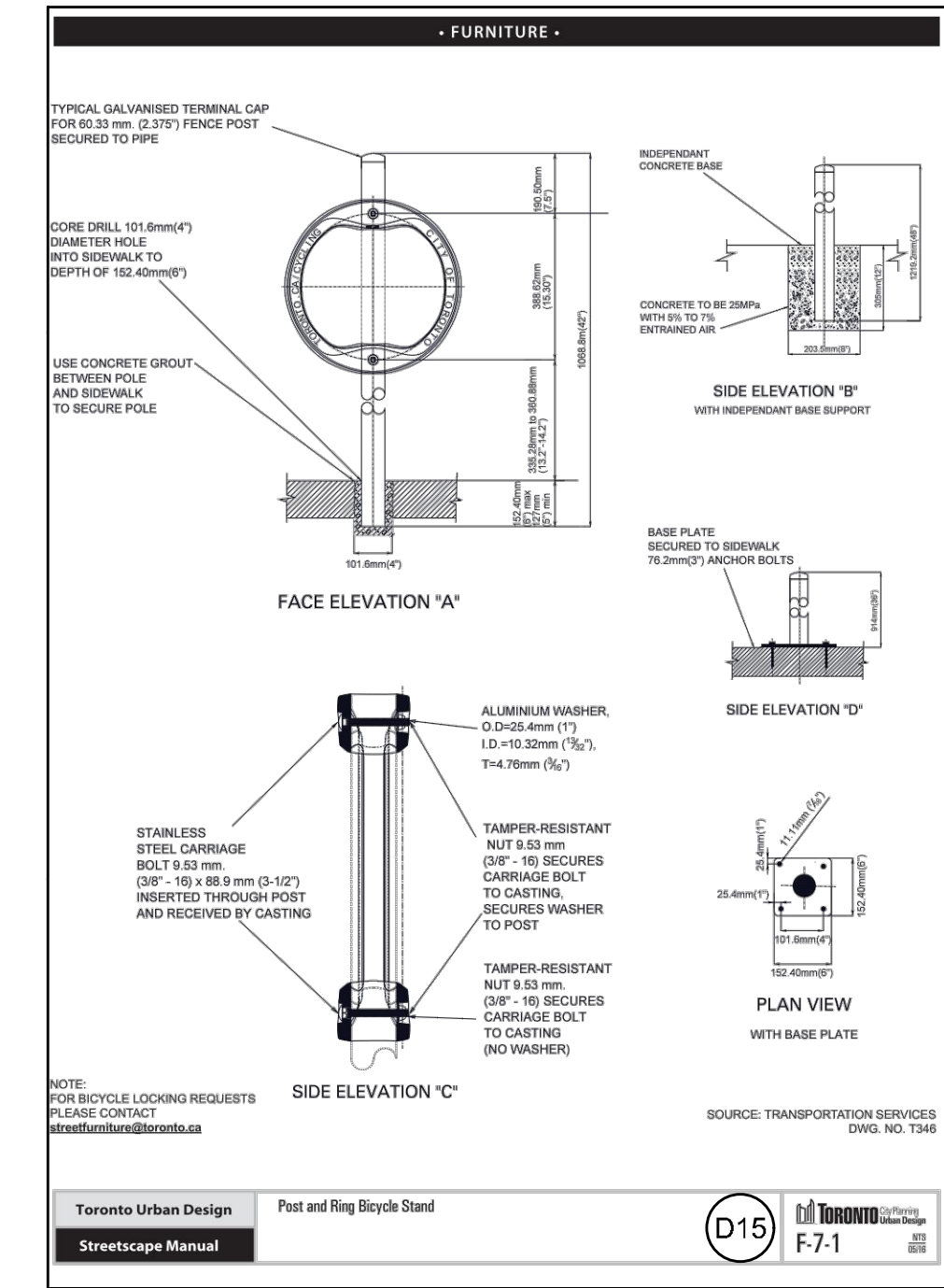
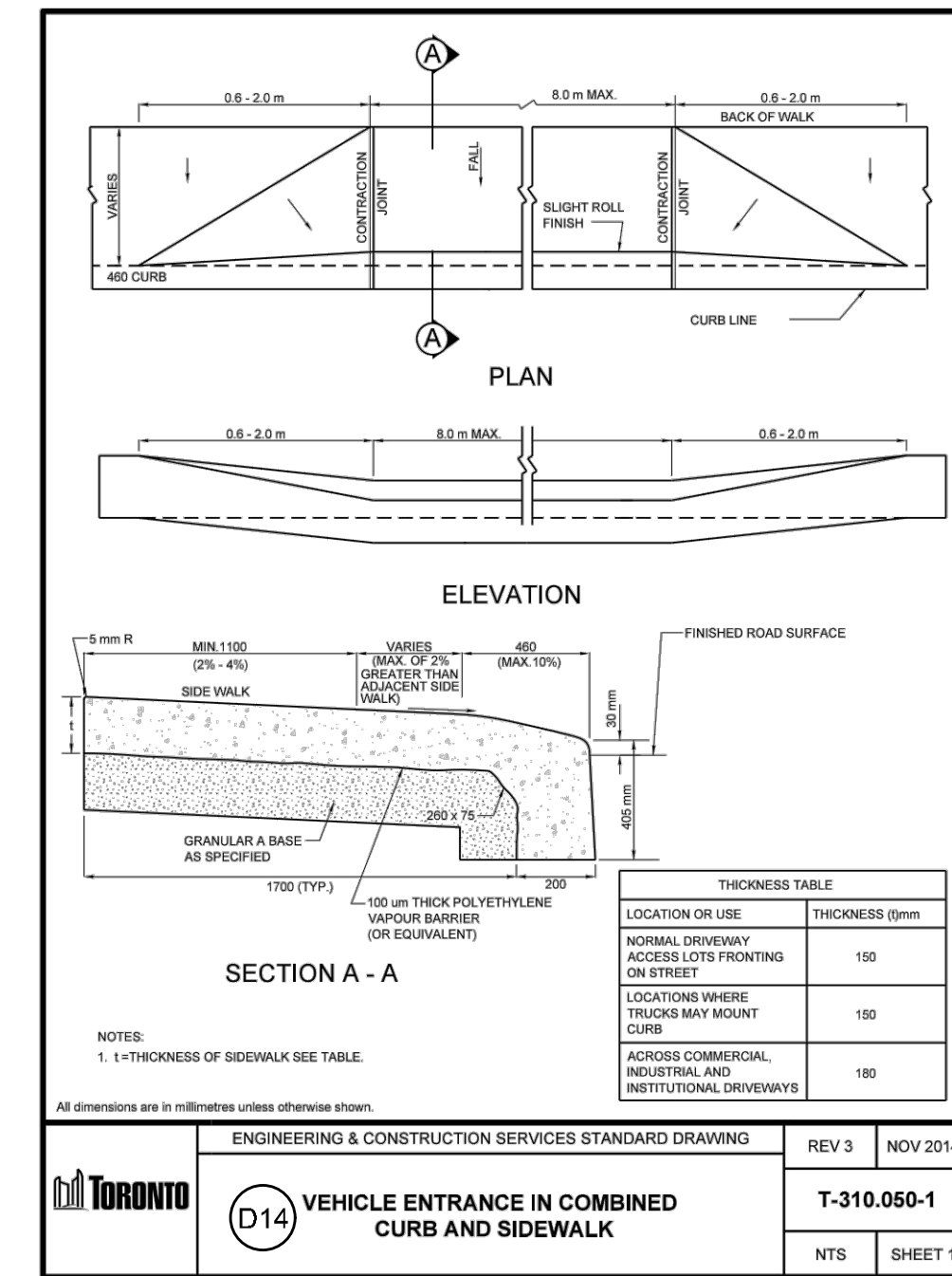
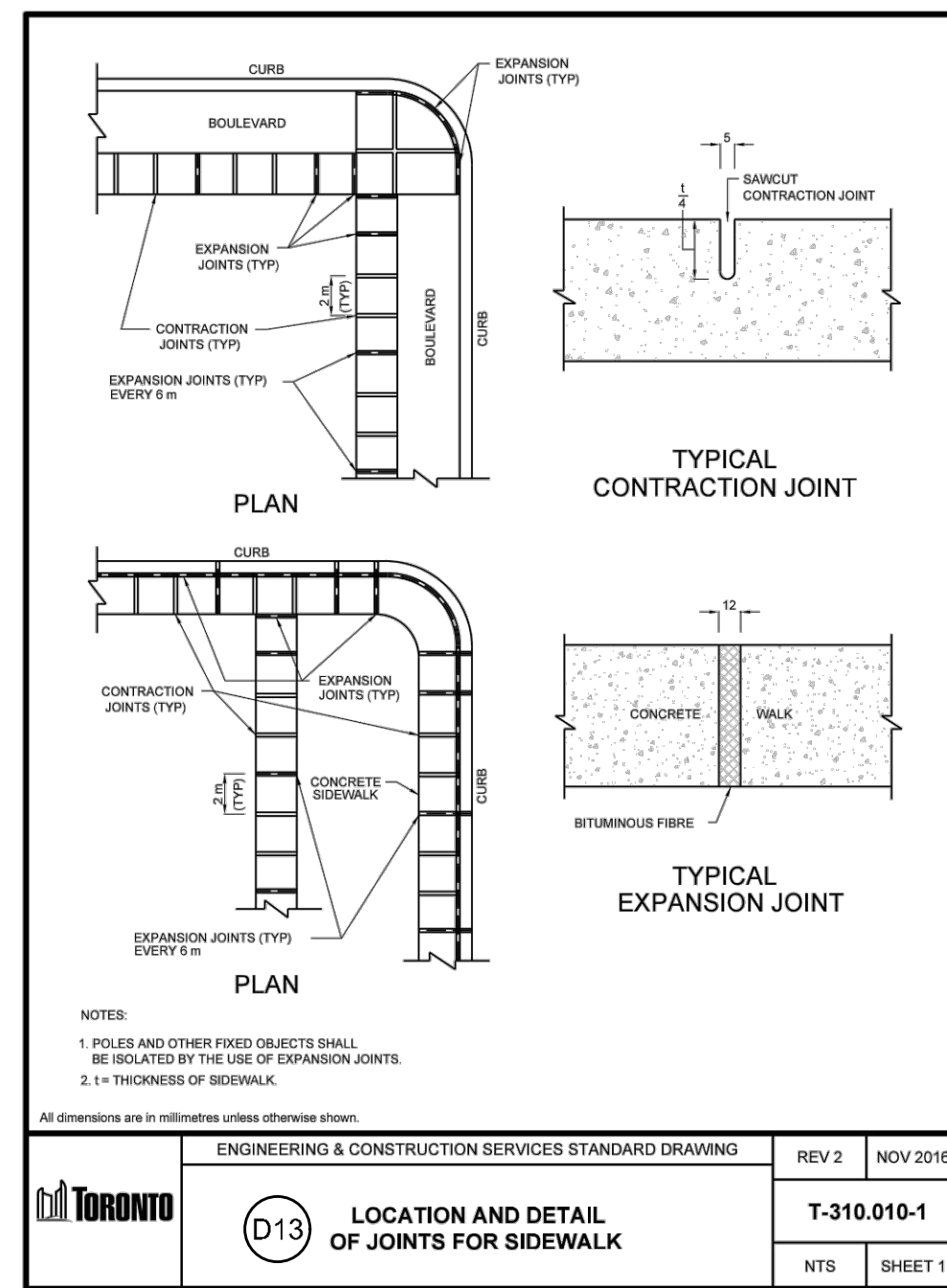
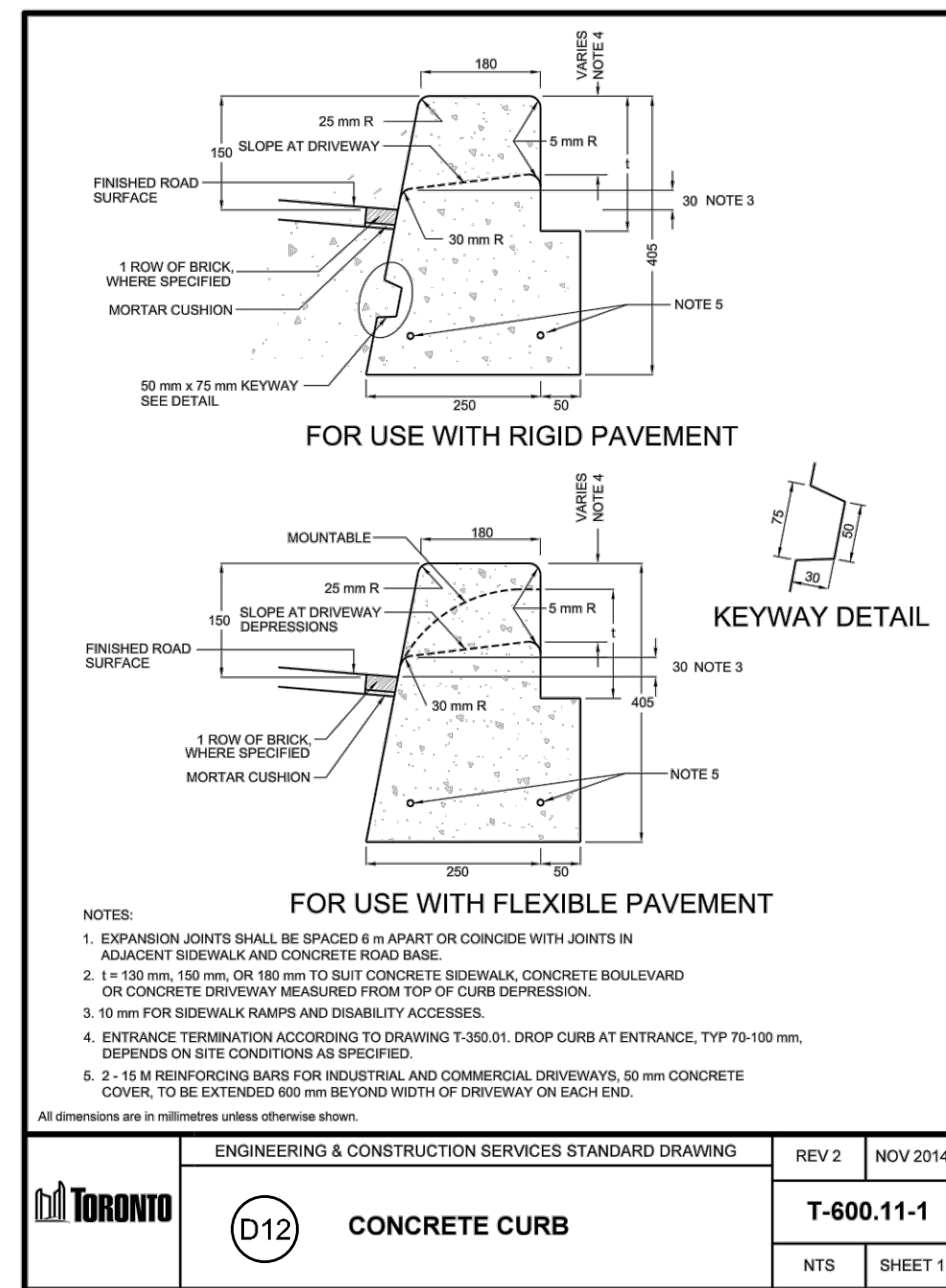
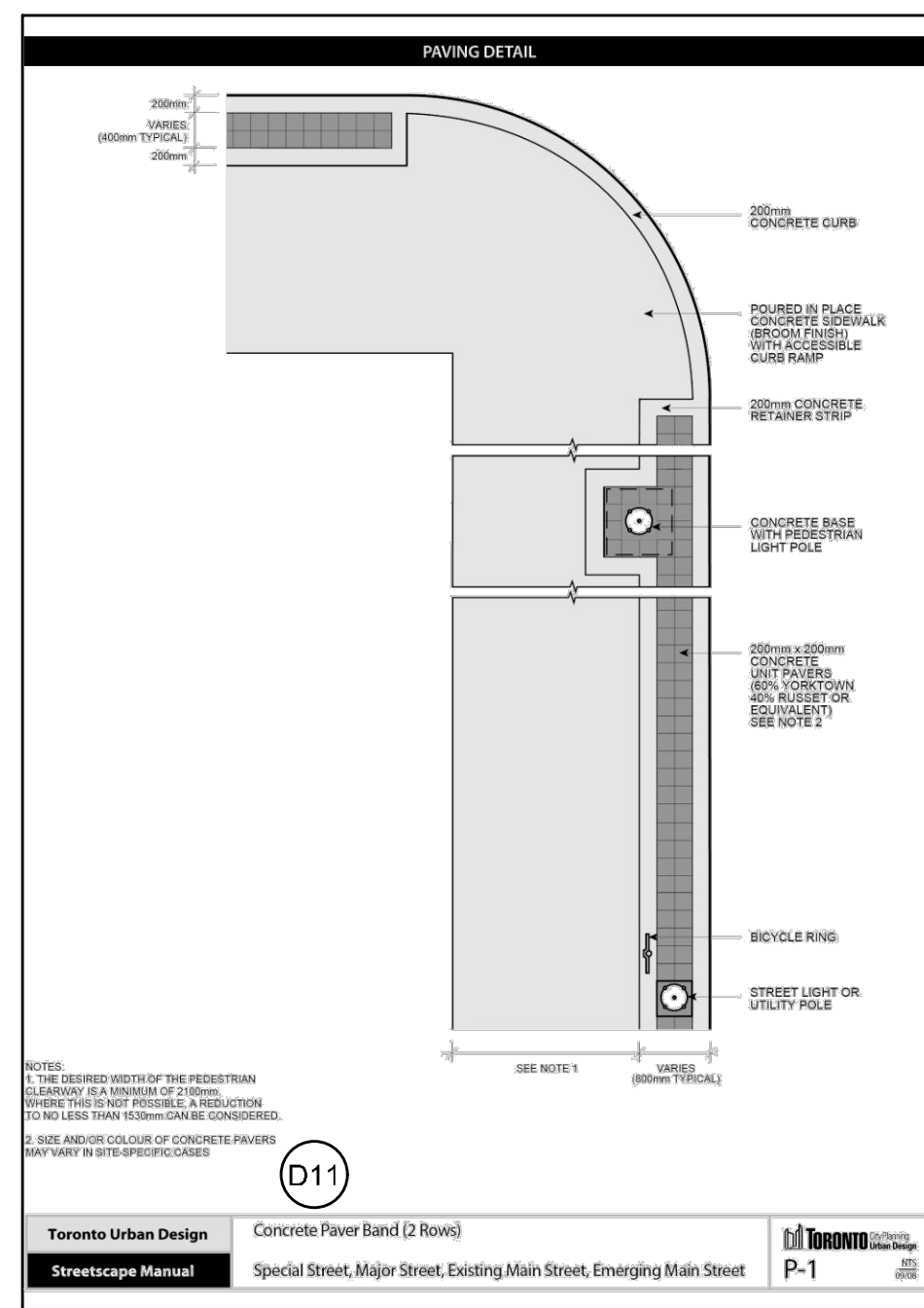
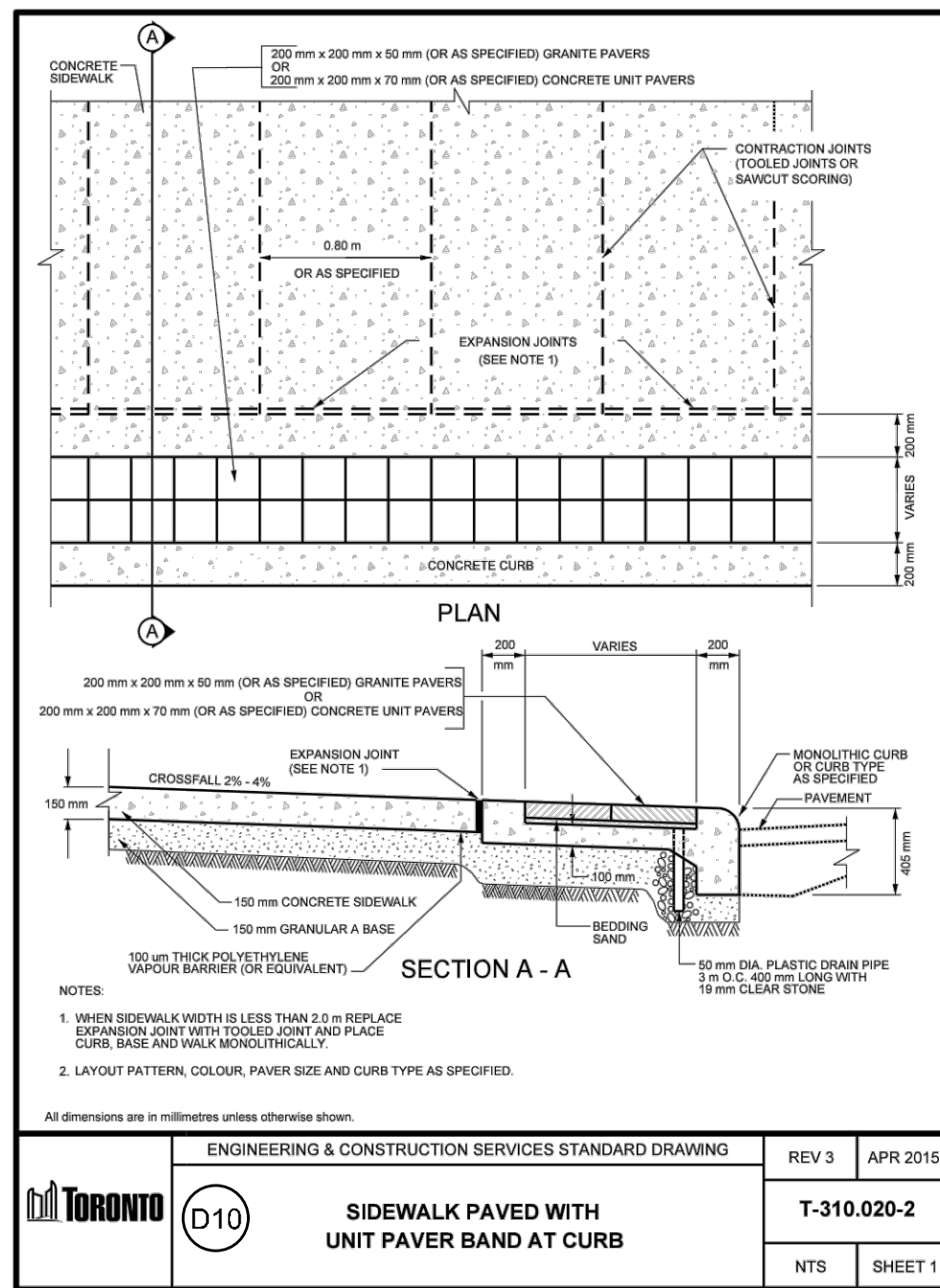
DATE APR 2021

DWG. FILE 21-648.DWG

SITE PLAN APPLICATION NO.:

DWG. No.

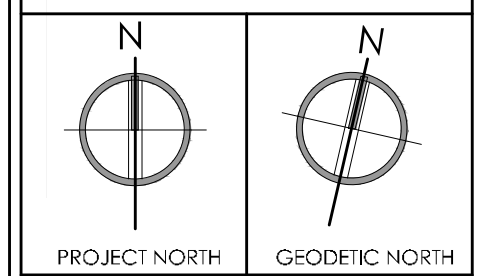
L101



NOTE:
THE CITY BOULEVARD IS:
-DESIGNED IN ACCORDANCE WITH THE MOST CURRENT VERSION OF THE CANADIAN HIGHWAY BRIDGE DESIGN CODE.
-DESIGNED TO WITHSTAND VEHICULAR IMPACT LOADING IN ACCORDANCE WITH THE MOST CURRENT VERSION OF THE CANADIAN HIGHWAY BRIDGE DESIGN CODE.



LEGEND:



NOTES:

REV	DESCRIPTION	DATE
1	ISSUED FOR REVISION	MAY 26, 21

Issues/Revisions



MARTEN-NIKZAD
LANDSCAPE ARCHITECTS INC.



1887 BAYVIEW AVENUE, UNIT 105 TORONTO, ONTARIO, M4S 1A6 T: 416-245-2299 F: info@marten-nikzad.ca

PROJECT ADDRESS:

BATHURST & RICHMOND

152-164 Bathurst Street and 623-627 Richmond Street, Toronto

DETAILS

PROJECT No.	21-648
SCALE	AS SHOWN
DATE	APR 2021
DWG. FILE	21-648.DWG
SITE PLAN APPLICATION NO.:	
DWG. No.	L200